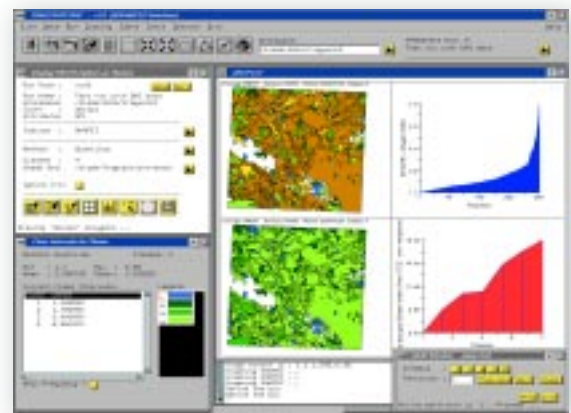
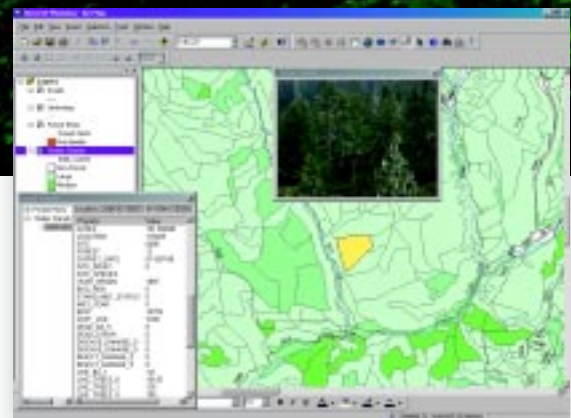
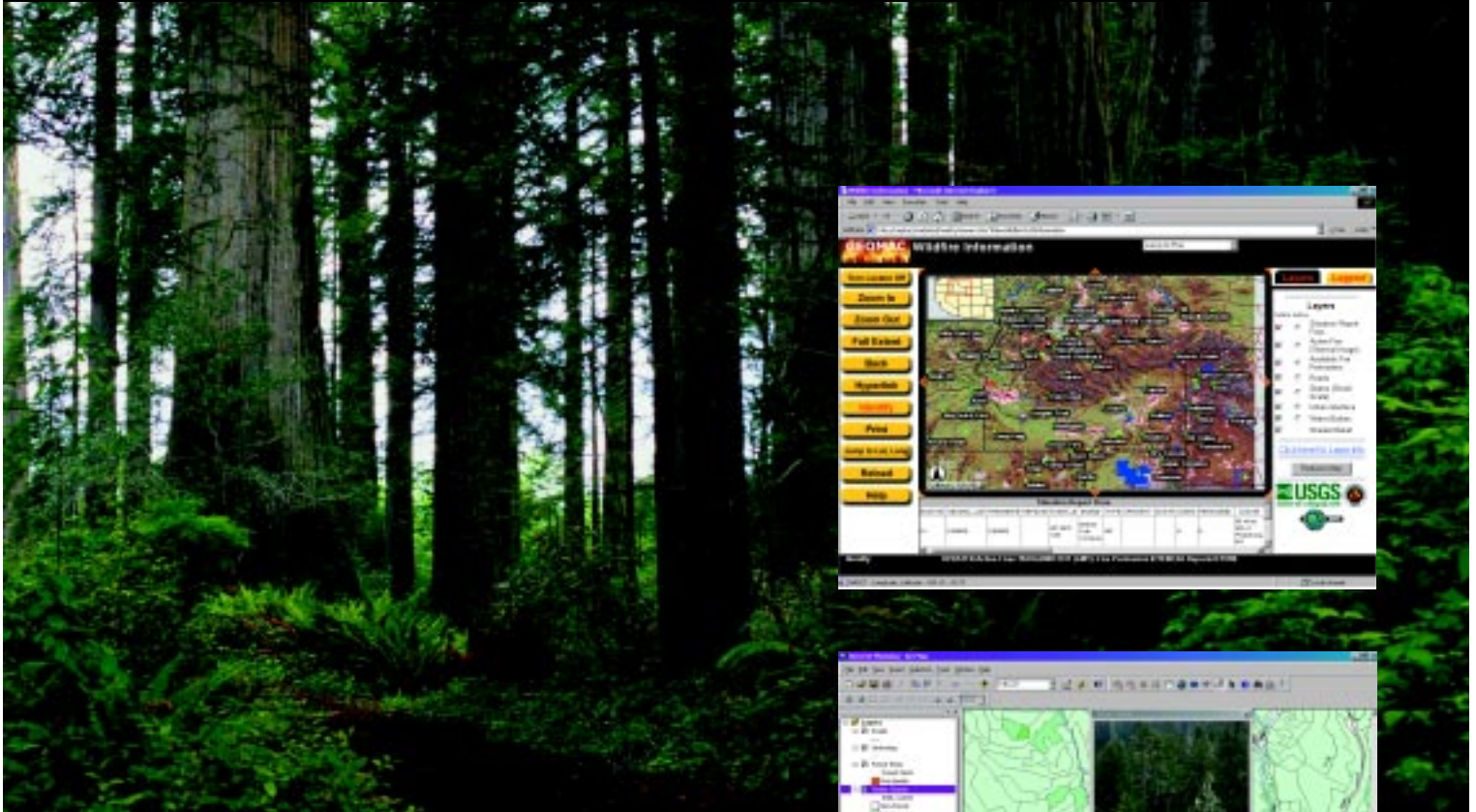


Can You See the Forest for the Trees?



GIS Is Providing the Key Information for Managing Forests.

Managing natural resources in today's ever-changing world has become a complex and demanding challenge to resource managers. They face conflicting issues of planning, production, business challenges, and environmental regulations. ESRI® geographic information system (GIS) software has been helping foresters and other natural resource professionals meet these challenges for more than 30 years. Whether you are dealing with strategic planning, environmental compliance, silvicultural planning, road design, pest management, or forest certification, ESRI can help you analyze and visualize those resources in new ways.

Whether you manage a small urban forest or 10 million acres of commercial forest lands, ESRI has solutions to fit your needs.

ESRI: *Creating GIS for a Better World*



www.esri.com/forestry

E-mail: info@esri.com

GIS in Irish Forestry



If a tree falls in the forest, and there is no one there to hear it, does it make a sound? Employees of the Irish Forestry Board or Coillte Teoranta, as it is commonly known, may not be within hearing distance of each falling tree, but you can be certain that even with management area sizes as small as 0.2 hectares, they can tell you its species, location, and ultimate use.

In 1986, Coillte Teoranta, then the Irish Forest Service, purchased ESRI's ArcInfo™ software, making it among the first users of a commercial GIS in Europe. In 1989, Coillte was formed as a state-owned company responsible for the management of state forests. The use of GIS for forest management and inventory continued to increase.

The original objective of Coillte's GIS was to facilitate continuous inventory and mapping of the forest estate. As GIS applications have grown, however, it has become a key component in the management of the timber resource, providing important decision support at both the strategic and operational levels. Coillte's core GIS system is based on ESRI's ArcView® and ArcInfo software. Extension products include ArcView 3D Analyst®, ArcView Spatial Analyst, ArcView Network Analyst, and ArcPress™.

Building on their progressive approach to GIS technologies, Coillte has begun implementing an exciting new project that should see the company become one of the demonstration sites for enterprise GIS in Europe.

This strategy involves using ArcIMS® as the map brokerage technology within an n-tier architecture. ArcSDE™ and Oracle® provide a central data repository and management system. Online spatial data update and editing applications will be provided through a custom Java™ client, and ArcPad™ will be used for collecting data in the field before uploading it to the master database. With the new enterprise system, Coillte staff will use GIS functionality for applications as diverse as land valuation, timber market analysis, harvest route planning, and landscape visualization.

In addition to managing its forests for commercial use, the system will help Coillte in complying with the requirements for sustainable forest management (SFM) certification resulting in a greater emphasis on biodiversity. This certification is now required for access to many European timber markets. Coillte's GIS has been an important underlying technology in this change of focus, enabling managers to consider many more factors in decision making than previously would have been possible.



For more information about ESRI software, please contact your local distributor.

| | | | |
|---|--|----------------------------------|-----------------------------------|
| Austria www.synergis.co.at | F.Y.R.O.M. www.gisdata.hr | Lithuania www.hnit-baltic.lt | Slovakia www.arcgeo.sk |
| Belgium and Luxembourg www.esribelux.com | Germany www.esri-germany.de | Malta 356-380953 | Slovenia www.gisdata.hr |
| Bulgaria 359-2-964-0850 | Greece and Cyprus www.marathondata.gr | Netherlands www.esrinl.com | Spain www.esri-es.com |
| Croatia www.gisdata.hr | Hungary www.esrihu.hu | Norway www.geodata.no | Sweden www.esri-sweden.com |
| Czech Republic www.arcdata.cz | Iceland www.samsyn.is | Poland www.gis.com.pl | Switzerland www.esri-suisse.ch |
| Denmark www.informi.dk | Ireland www.paradigm.ie | Portugal www.esri-portugal.pt | Turkey www.islem.com.tr |
| Finland and Estonia www.nongroup.com | Israel www.systematics.co.il | Romania www.esriro.ro | Ukraine 380-44-2944218 |
| France www.esrifrance.com | Italy www.esriitalia.it | Russia www.dataplus.ru | United Kingdom www.esriuk.com |

ESRI Corporate Headquarters

Redlands, California
Tel.: 909-793-2853
E-mail: info@esri.com

ESRI Europe

The Netherlands
Tel.: 31-10-217-7788
E-mail: europe@esri.com

www.esri.com

